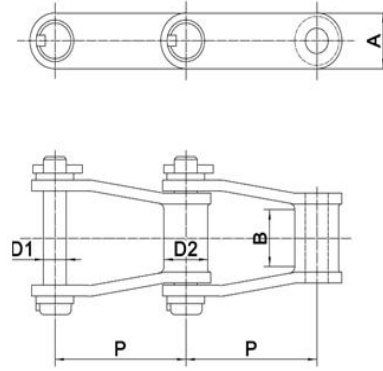
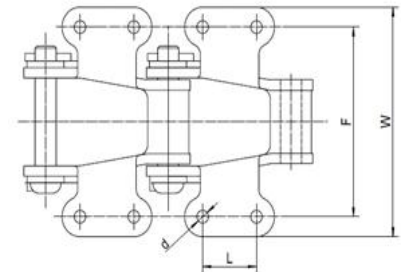
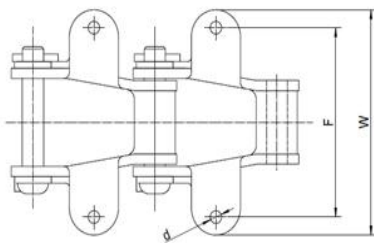
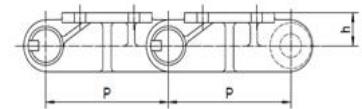
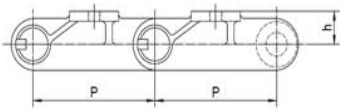


## 400 Class Pintle Chain



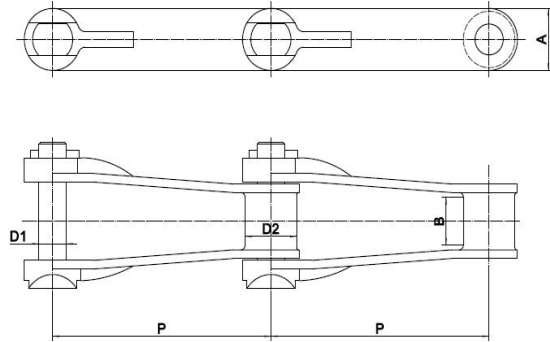
Chain NO.	Pitch		Dimensions			
	P	A	B	D1	D2	
442	1.375"	0.75"	0.63"	0.31"	0.56"	
	34.92mm	19.05mm	16mm	7.9mm	14.2mm	
452	1.506"	0.84"	0.63"	0.38"	0.69"	
	38.25mm	21.34mm	16mm	9.65mm	17.5mm	
455	1.63"	0.84"	0.69"	0.38"	0.63"	
	41.4mm	21.34mm	17.5mm	9.65mm	16mm	
462	1.634"	0.94"	0.81"	0.44"	0.72"	
	41.5mm	23.9mm	20.6mm	11.2mm	18.3mm	
477	2.308"	1"	0.69"	0.44"	0.81"	
	58.62mm	25.4mm	17.5mm	11.2mm	20.6mm	
488	2.609"	1"	0.75"	0.44"	0.88"	
	66.27mm	25.4mm	19.05mm	11.2mm	22.35mm	
4103	3.075"	1.50"	1"	0.75"	1.25"	
	78.1mm	38.1mm	25.4mm	19.05mm	31.75mm	



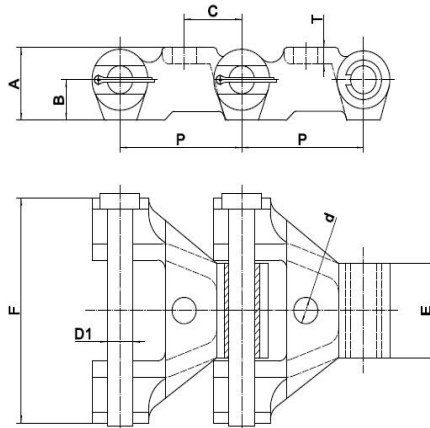
Chain NO.	Pitch		Dimensions				
	P	h	L	d	F	W	
488	2.609"	0.68"	1.26"	0.33"	3.64"	4.57"	
	66.27mm	17.3mm	32mm	8.5mm	92.5mm	116mm	
4103	3.075"	0.89"	1.50"	0.51"	4.13"	5.08"	
	78.1mm	22.5mm	38mm	13mm	105mm	129mm	

NOTE: Please consult with Camel Convey for requirements for not listed above.

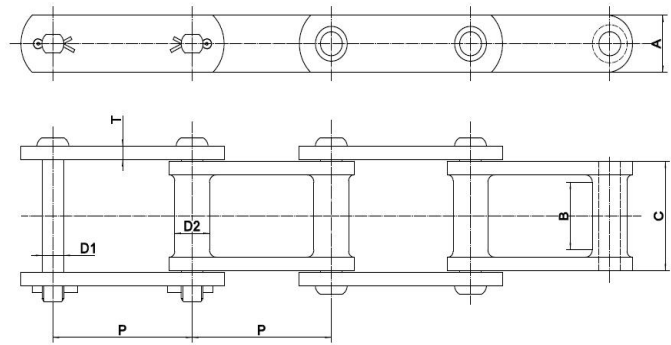
Email: [sales@camelconvey.com](mailto:sales@camelconvey.com)  
[www.camelconvey.com](http://www.camelconvey.com)



Chain NO.	Pitch		Dimensions				Average U.T.S
	P	A	B	D1	D2		
720S	6"	1.56"	1.13"	0.75"	1.44"	30000 lbs	
	152.4mm	39.6mm	28.7mm	19.05mm	36.6mm	133 KN	
730	6"	1.75"	1.13"	0.75"	1.5"	30000 lbs	
	152.4mm	44.45mm	28.7mm	19.05mm	38.1mm	133 KN	

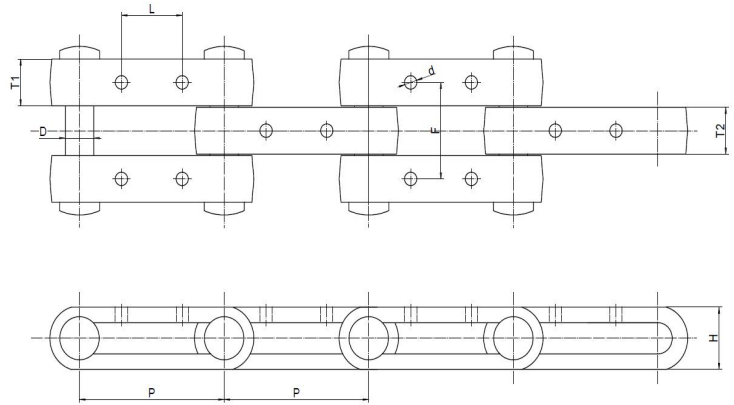


Chain NO.	Pitch	Dimensions							
	P	A	B	C	D1	d	E	F	T
907-E51	3.17"	1.65"	0.94"	1.50"	0.63"	0.63"	2.24"	5.35"	0.38"
	80.5mm	42mm	23.8mm	38.1mm	16mm	16mm	57mm	136mm	9.65mm



Chain Size	Pitch		Dimensions					Average U.T.S
	P	A	B	C	D1	D2	T	
C55	1.631"	0.75"	0.69"	1.26"	0.38"	0.73"	0.197"	10000 lbs
	41.43mm	19.05mm	17.5mm	32mm	9.6mm	18.5mm	5mm	45KN
C102B	4"	1.50"	2"	2.87"	0.63"	1"	0.35"	24000 lbs
	101.6mm	38.1mm	50.8mm	73mm	16mm	25.4mm	9mm	106KN
C131	3.07"	1.50"	1.13"	2.05"	0.63"	1.25"	0.35"	24000 lbs
	78.1mm	38.1mm	28.7mm	52mm	16mm	31.75mm	9mm	106KN
C132	6"	2"	3.13"	4.37"	1"	1.78"	0.47"	50000 lbs
	152.4mm	50.8mm	79.5mm	111mm	25.4mm	45.2mm	12mm	222KN
C188	2.61"	1.13"	0.94"	1.57"	0.50"	0.88"	0.24"	14000 lbs
	66.27mm	28.6mm	23.9mm	39.8mm	12.7mm	22.4mm	6mm	62KN

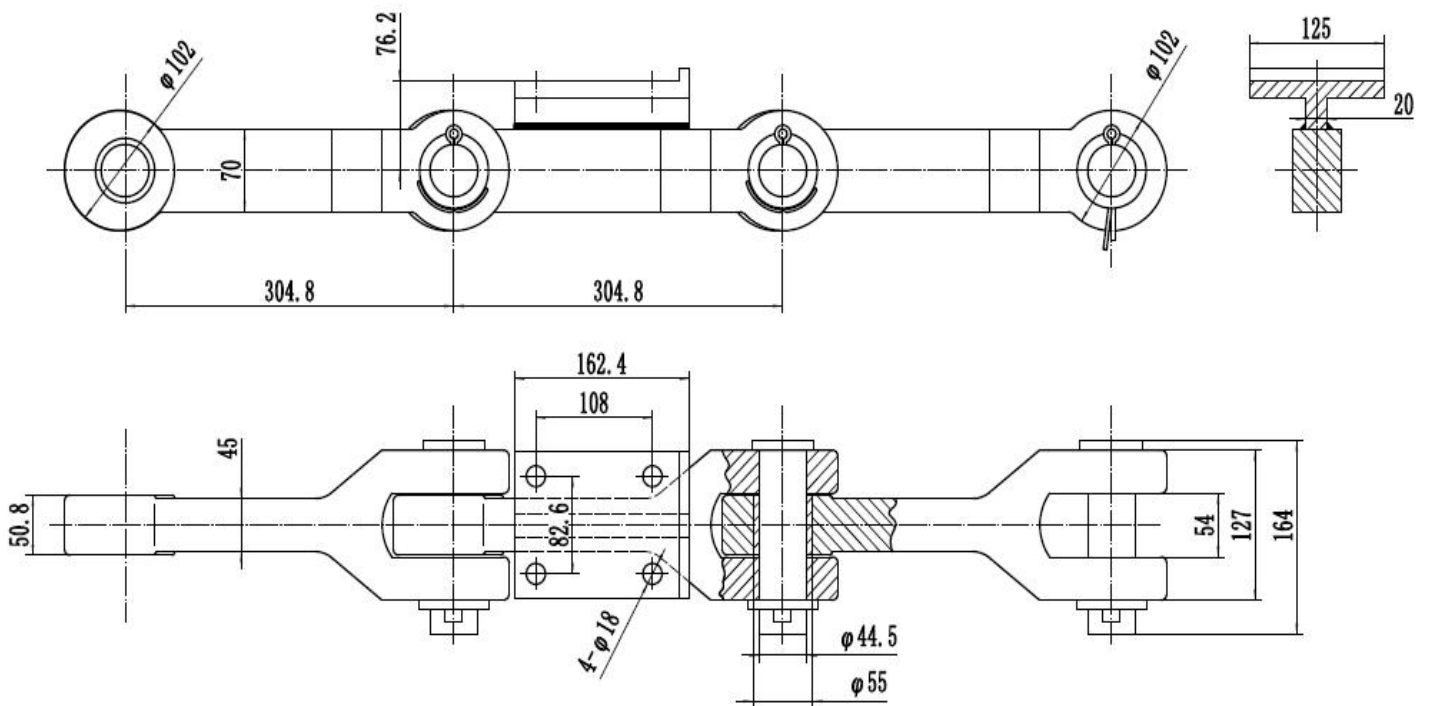
Forged Loop Link Chain



Chain Number	Pitch	Other Dimensions							Ultimate Tensile Strength
	P	D	F	H	L	T1	T2	d	Q
P152.4	6"	1.18"	3.66"	2.36"	2.52"	1.77"	1.77"	0.51"	76500 lbs
	152.4mm	30mm	93mm	60mm	64mm	45mm	45mm	13mm	340 KN
B5291	6"	1.54"	3.54"	3.15"	3"	1.57"	1.97"	0.67"	141700 lbs
	152.4mm	39mm	90mm	80mm	76.2mm	40mm	50mm	17mm	630 KN
P228.6	9"	1.54"	3.54"	3.15"	3.74"	1.57"	1.97"	0.67"	160600 lbs
	228.6mm	39mm	90mm	80mm	95mm	40mm	50mm	17mm	714 KN

NOTE: Please consult with Camel Convey for requirements for not listed above.

Email: [sales@camelconvey.com](mailto:sales@camelconvey.com)  
[www.camelconvey.com](http://www.camelconvey.com)

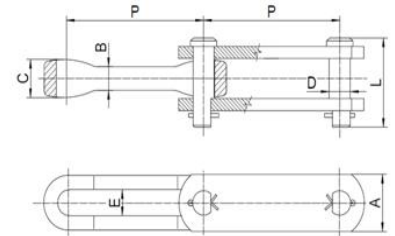
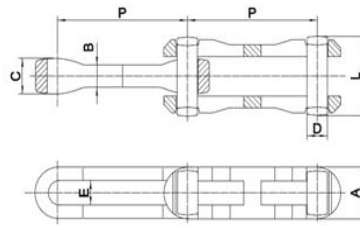
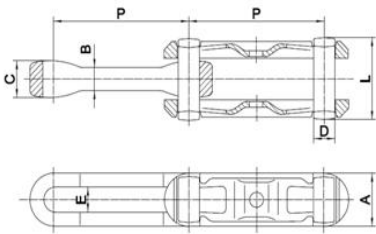




X-Type

Regular-Type

S-Type



Chain NO.	Normal Pitch	Actual Pitch	Pin Diameter	Pin Length	Other Dimensions				Ultimate Tensile Strength
	P	P	D	L	A	B	C	E	Q
X698	6"	6.03"	1.126"	3.74"	2.54"	1"	1.54"	1.26"	114750lbs
	152.4mm	153.2mm	28.6mm	95mm	64.5mm	25.4mm	39mm	32mm	510KN

NOTE: Please consult with Camel Convey for requirements for not listed above.

Email: [sales@camelconvey.com](mailto:sales@camelconvey.com)  
[www.camelconvey.com](http://www.camelconvey.com)